

Issuer/Name of transaction:	SuperDrive Investments (RF) Ltd
Programme Administrator	Stonehage Fleming Corporate Services (Pty) Ltd
Originator and Servicer	BMW Financial Services (South Africa) Proprietary Limited
Rating Agency	Moody's Investors Service Inc
Asset Class	Asset Backed Securitisation
Underlying Assets	Vehicle Instalment Sale Agreements
Reporting Currency for Assets and Liabilities	ZAR
Original issued amount including subordinated loans	2,000,000,000
Current issue outstanding	3,618,000,000
State of transaction	Revolving
Date report prepared	19 August 2022
Current Period asset cut-off date (Determination Date)	31 July 2022
Interest Period:	From (including) 23 May 2022 To (excluding) 22 August 2022
Interest Payment Date	22 August 2022
Portfolio covenants reported at the determination date of 30 April 2022	91
Day count convention	Following business day
Rate reset date	23 May 2022
Reference rate	4.883% (3 Month JIBAR) 8.505% (Prime - Average for the period)

Notes	Class A12	Class A13	Class A14	Class A15	Class A16	Class A17
	SPDA12	SPDA13	SPDA14	SPDA15	SPDA16	SPDA15
JSE Code						
ISIN Code	ZAG000145947	ZAG000161787	ZAG000178658	ZAG000178666	ZAG000188764	ZAG000178666
Date issued	21 August 2017	21 August 2019	23 August 2021	23 August 2021	22 August 2022	23 August 2021
Legal Maturity	21 August 2026	21 August 2028	21 August 2030	21 August 2030	21 August 2031	21 August 2030
Step-up call date (Scheduled Maturity Date)	21 August 2022	21 August 2024	21 August 2024	21 August 2026	21 August 2025	21 August 2026
Original Moody's Rating	A3/Aaa.za	A3/Aaa.za	Aaa.za/Baa1(sf)	Aaa.za/Baa1(sf)	Aaa.za/Baa1(sf)	Aaa.za/Baa1(sf)
Current Moody's Rating	Baa1 (sf) / Aaa.za (sf)	Baa1 (sf) / Aaa.za (sf)	Aaa.za/Baa1(sf)	Aaa.za/Baa1(sf)	Aaa.za/Baa1(sf)	Aaa.za/Baa1(sf)
Original Balance	1,019,000,000	1,099,000,000	750,000,000	750,000,000	418,000,000	601,000,000
Balance at start of period	1,019,000,000	1,099,000,000	750,000,000	750,000,000	418,000,000	601,000,000
Principal distributed in period	0.00	0.00	0.00	0.00	0.00	0.00
Principal received in period	0.00	0.00	0.00	0.00	0.00	0.00
Balance at end of period	1,019,000,000	1,099,000,000	750,000,000	750,000,000	418,000,000	601,000,000
Loss on tranche	0.00	0.00	0.00	0.00	0.00	0.00
Bond Factor before Payment	100.00%	100.00%	100.00%	100.00%	100.00%	100.00%
Bond Factor after Payment	100.00%	100.00%	100.00%	100.00%	100.00%	100.00%
Original tranching %	28.92%	23.78%	26.15%	20.73%	11.55%	16.61%
Tranching % at start of period	28.16%	30.38%	20.73%	20.73%	11.55%	16.61%
Tranching % at end of period	28.16%	30.38%	20.73%	20.73%	13.85%	23.86%
Original credit enhancement %	53.87%	53.87%	26.15%	20.73%	13.85%	23.86%
Credit enhancement % at start of period	50.05%	51.59%	44.88%	44.88%	20.00%	20.00%
Credit enhancement % at end of period	50.42%	51.95%	45.29%	45.29%	45.46%	49.53%
Reference Rate	4.883%	4.883%	4.883%	4.883%	4.883%	4.883%
Margin or Fixed Rate	1.67%	1.43%	1.19%	1.31%	1.20%	1.34%
Coupon Rate	6.553%	6.313%	6.073%	6.193%	6.083%	6.223%
Step-up rate	Reference rate + 0.5%	Reference rate + 0.4%	Reference rate + 0.4%	Reference rate + 0.4%	Reference rate + 0.4%	Reference rate + 0.4%
Interest Accrued in period	16,648,031	17,297,447	11,355,678	11,580,062	0	0
Interest Payment	16,648,031	17,297,447	11,355,678	11,580,062	0	0
Interest shortfall	0.00	0.00	0.00	0.00	0.00	0.00
Cumulative interest shortfall	0.00	0.00	0.00	0.00	0.00	0.00

The Class A1, A2, A3, A4, A5, A6, A7, A8, A9 and A10 notes are not reflected above, as these have been repaid in full, at the relevant maturity date and hence have a zero balance.

Aggregate principal reconciliation	
Opening balance	3,618,000,000
Repayment	-
Tap issue	-
Closing balance	3,618,000,000
Balance at inception	2,000,000,000
% change for the quarter	0.00%

Principal redemption calculation

	Opening balance	(Redemption)/Issue	Required amount	Required level
	-	-	-	-
Reserve Fund	36,180,000	-	36,180,000	36,180,000
Total unwind	-	-	-	-
	-	-	-	-
Total notes	3,618,000,000	-	3,618,000,000	-
Subordinated loans	904,500,000	-0	904,500,000	904,500,000

Principal Deficiency on Determination Date	31-Jul-22
Page 52 - Programme Memorandum the amount, if any, by which the Potential Redemption Amount exceeds the remaining cash in the Pre-Enforcement Priority of Payments as at any Determination Date after the payment of or provision for items 11.1.1 to 11.1.7 (both inclusive) in the Pre-Enforcement Priority of Payments	
Potential redemption amount	541,505,159
Closing balance of performing assets at the previous determination date	3,830,612,004
Assets purchased during the period	548,281,499
Assets sold during the period	(11,307,007)
Less: Closing balance of performing assets at the current determination date	(3,826,081,336)
Plus: Principal deficiency at the previous determination date	-
Less: Cash remaining after payment of items 11.1.1 to 11.1.7 to pre-enforcement priority of payments	2,319,295,553
Principal Deficiency	-

Principal deficiency Ledger

Principal deficiency prior period	-
Principal deficiency current period	-
Principal Balance at the end of the reporting period	-

Performing loans

	31 July 2022
Beginning of the reporting period	3,830,612,004
Loans transferred in	548,281,499
Loans transferred out	(11,307,007)
Transfer to non performing loans	(6,494,635)
Other movement	(535,010,524)
End of reporting period	3,826,081,336

Total Assets	Amount	%
Performing Portfolio loans	3,826,081,336	95.31%
Non-Performing portfolio loans	188,350,386	4.69%
Total	4,014,431,722	100.00%

Subordinated loans and reserves - BMW Financial Services	
Subordinated Loan No.1	
Balance at transaction close	600,693,634
Balance at the beginning of reporting period	600,693,634
Bad debt write-off against Subordinated Loan in this quarter	-
Repayment of sub-ordinated loan	-
Balance after IPD	600,693,634
Subordinated Loan No. 2	
Balance at transaction close	303,806,367
Balance at the beginning of reporting period	303,806,367
Bad debt write-off against Subordinated Loan in this quarter	-
Increase in sub-ordinated loan at tap issue date	-
Repayment of sub-ordinated loan	-
Balance after IPD	303,806,367
Excess spread	
Portfolio covenants reported at the determination date of 31 July 2022	-
Required amount	n/a
Balance at the beginning of reporting period	680,435,742
Cash portion	680,317,361
Portion invested in assets	118,381
Reduction in excess spread portion invested in assets	-
Interest capitalised for the quarter	(680,435,742)
Transfer to priority of payments	-
Excess spread generated during the period	719,673,361
Utilisation of excess spread during the period	-
Balance at the end of IPD	719,673,361
Reserve Fund (within Notice Deposit Account)	
Balance at transaction close	36,180,000
Required amount	36,180,000
Balance at the beginning of reporting period	36,180,000
Transfer from priority of payments	-
Balance at the end of IPD	36,180,000
Call Account	
Balance at the beginning of the reporting period	780,249,925
Top up net of transfer out	(536,974,491)
Net outflow from redemption / issue of notes	-
	243,275,434
Other movements during the quarter	539,709,679
Balance at the end of reporting period	782,985,114

Closing cash balance at quarter-end 819,165,114

Key events during the period:
None

Quarterly Cash Flows

1. Monies Received during the period	
Bondholders and Sub-ordinated Debt Providers	1,012,194,663
Proceeds from the issue of notes (A16 and A17)	1,019,000,000
Proceeds from the sale of assets (buyback)	(6,805,337)
Reserve fund increase for tap issue	-
Subordinated loan received	-
Purchase Reserve	-
Liquidity facility provider	-
Capital Collections	532,225,023
Installments - Capital	195,803,132
Installments - Capital of which Prepayments	12,885,862
Portfolio covenants reported at the determination date of 31 July 2022	323,536,030
Reserves released	716,615,742
Portfolio covenants reported at the determination date of 31 July 2022	680,317,361
Excess Spread (Invested in assets at previous PoP)	118,381
Reserve Fund	36,180,000
Interest Received	102,440,458
Interest from instalments	87,777,387
Settlement revenue	4,277,272
Admin fee	2,123,870
Interest earned on collections ("Call account interest")	7,842,081
Interest earned on Reserve Fund	419,848
Interest on Excess Spread	-
Other Income	18,855,766
Recoveries from non-performing loans- Repos	9,324,000
Recoveries from non-performing loans - Legal debtors	10,728,546
Fee income	1,358,023
Derivative interest received	(2,554,804)
SARS refund	-
Other	-
TOTAL	2,382,331,652

2. Monies Allocation	
Expenses and Interest	63,036,099
Senior Expenses	6,154,881
Recoveries from non-performing loans - Legal debtors	-
Derivative counterparty expenses	-
Interest due on notes	56,881,218
Purchase Reserve	-
Top up - Assets already purchased	548,281,499
Top up - Assets to be purchased	543,724,445
Capital collection surplus over top-up	(566,586,257)
Transfer to Reserve Fund (new required amount)	36,180,000
Preference Dividend paid	-
Redemption of Capital	
Class A12 notes	1,019,000,000
Other Monies Allocated	18,904,124
Subordinated loan interest	18,904,124
Subordinated loan capital	-
Total Excess Spread	719,791,742
Excess spread (unutilised) - held in cash	719,673,361
Excess spread (unutilised) - held in assets	118,381
TOTAL	2,382,331,652

Swap information	
Type of swap	Floating (Prime) for floating (3-month JIBAR)
Current Moody's rating of swap counterparty	Baa1
Moody's rating trigger	Prime-1.za / Aa3.za
Maturity date of swap agreement	The later of the Legal Final Maturity Dates of the Notes issued under the Programme on the Trade Date and the day on which Principal Amount Outstanding in respect of all Notes issued on the Trade Date is zero.
Hedging	All prime-linked assets of the issuer are hedged into JIBAR rate inked assets
Notional	3,618,000,000.00
Swap margin	(3-month JIBAR + 142bps) - (Prime rate - 1.85%)
Counter party	Standard Bank of South Africa
Interest Received	6.30%
Day Count	91
Receivable/(Payable)	(2,554,804)
Net interest payable on Swaps	<u><u>(2,554,804)</u></u>

Portfolio covenants reported at the determination date of 31 July 2022

Portfolio covenants	Covenant	Current level	Breached? Yes/No
Weighted average balloon payment not > 40%	40%	23.16%	No
Used Vehicles<= 50%	50%	47.22%	No
Weighted average seasoning must be >= 12 months	12	35.92	No
Weighted average margin >= prime less 0.75%	-0.75	0.74	No
Originated by Direct sales	10%	1.08%	No
Single obligor ledger <= ZAR 2 500 000	R 2,500,000	R 1,902,059	No

Geographical covenant

Gauteng	85%	57.51%	No
Western Cape	40%	10.68%	No
Eastern Cape	25%	2.89%	No
Free State	25%	2.37%	No
Kwa-Zulu Natal	40%	16.96%	No
Limpopo	25%	2.90%	No
Mpumalanga	25%	3.12%	No
North West	25%	2.67%	No
Northern Cape	25%	0.71%	No
Unclassified	2%	0.18%	No

GFV specific covenants

Max balloon payment must be <= 70%	70%	69.61%	No
GFV portion of pool must be < 15%	30%	9.21%	No

Early amortisation triggers	Yes/No
The Administrator and the Servicer agree that the Programme should wind-down prior to the Programme Termination Date	No
A breach of a Portfolio Covenant and such breach is not remedied by the Issuer within a period of fifteen days of such breach having occurred	No
A breach of a Performance Covenant and such breach is not remedied by the Issuer within a period of fifteen days of such breach having occurred	No
A Servicer Default occurred	No
An Event of Default occurs and an Enforcement Notice is delivered by the Guarantor SPV	No
A failure by the Issuer to redeem any Tranche of Notes on the Scheduled Maturity Date of such Tranche of Notes	No
A balance of more than R5m or 5% of the principal amount of the Notes, whichever is greater, remains in the Asset Purchase Ledger for more than two Payment Dates	No
Failure by the Issuer to maintain the Reserve Fund at the Reserve Fund Required Amount on two consecutive Payment Dates	No
A Hedge Counterparty Default occurs and no replacement Hedge Counterparty is appointed by the second Payment Date following such default	No
The Programme Wide Liquidity Facility Agreement is terminated and no replacement Liquidity Facility Provider is appointed by the second Payment Date following such termination	No

Delinquent participating assets**	Quarter end
Number of loans	27
Asset value	9,301,716
** Assets in arrears for more than 60 days but less than 90 days	

Performance covenants	Test	Current	Previous quarter	In Breach?
Principle deficiency ledger	A positive balance > than R100k is recorded in the principal deficiency ledger on two consecutive payment dates AND % outstanding balance of the assets on a 3 month rolling ave basis that are > 60 but less than 90 days in arrears is > 2%	No	No	No
Arrears trigger	2.00%	0.22%	0.38%	No

Arrear analysis	Jul-22	%	Apr-22	%	Jan-22	%
0-30 days	203,627,479	63.73%	205,580,952	60.70%	199,445,931	59.10%
31-60 days	23,207,675	7.26%	24,513,099	7.24%	33,955,456	10.06%
61-90 days	9,301,716	2.91%	12,554,032	3.71%	13,928,105	4.13%
91-120days	7,703,967	2.41%	12,186,339	3.60%	7,658,945	2.27%
120+ days	75,696,052	23.69%	83,853,381	24.76%	82,487,653	24.44%
Total	319,536,888	100.00%	338,687,803	100.00%	337,476,090	100.00%

Cash Excess Spread Calculation	Amount
Opening Balance	680,317,361
Excess cash from prior quarter	
Interest income received	102,440,458
Other Income	21,410,569
Interest received on derivatives	-2,554,804
SARS tax refund	-
Reserve Fund Opening Balance	36,180,000
Buyback of excess spread held in assets	-
Total income	837,793,584
Senior expenses	(6,154,881)
Subordinated loan interest	(18,904,124)
Interest paid to noteholders	(56,881,218)
Reserve fund closing balance	(36,180,000)
Dividend Paid	-
Total expenses	(118,120,223)
Net cash excess spread	719,673,361

Cumulative Static Loss and Recoveries

Non-Performing Loans and Write-offs		
Cumulative Non Performing Loans	Cumulative recoveries	Cumulative net Non-Performing Loans
583,835,519	395,485,133	188,350,386

*Restated , balanced back to Trial balance

Non-Performing Loans and Write-offs			
Number of Non-Performing Loans during the period	Number of Non-Performing Loans as % of number of loans at Issue Date (Aug 2021)	Value of Non-Performing Loans during the period	Value of Non-Performing Loans as % of Value of loans at Issue Date (Aug 2021)
22	0.13%	6,494,635	4.16%

Number of Loans Written-off during the Period	Number of Written-off Loans as % of number of loans at Issue Date (Aug 2021)	Value of Loans Written-off during the Period	Value of Written-off Loans as % of Value of loans at Issue Date (Aug 2021)
30	0.18%	645,000	0.01%

Non-performing loans sold by the issuer during the period*	Cumulative Non-performing number of loans sold by the issuer *	Value of Non-performing loans sold by the issuer during the period*	Cumulative value of Non-performing number of loans sold by the issuer *
-	966	-	182,698,887

Earning Assets which have been written off 100% and have no further chance of recovery

SUMMARY			
2017	230	39,008,475	39,008,475
2018	43	8,963,354	47,971,828
2019	256	45,969,491	93,941,319
2021	437	88,757,568	182,698,887

Value of Write-offs Recovered during the period	Recoveries for the period as a % of Write-offs to date
728	0

JSE Debt Listing Requirements

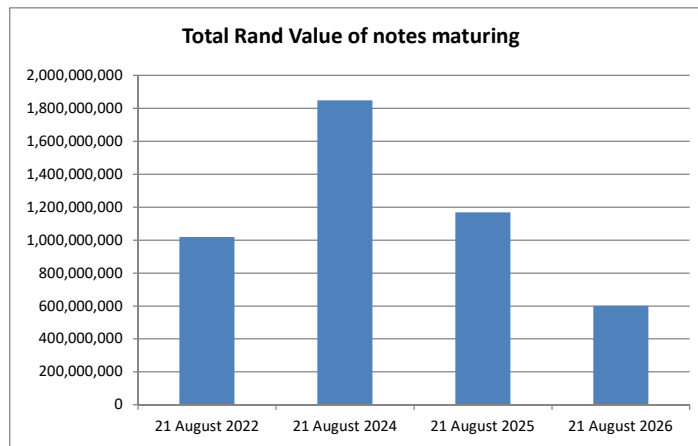
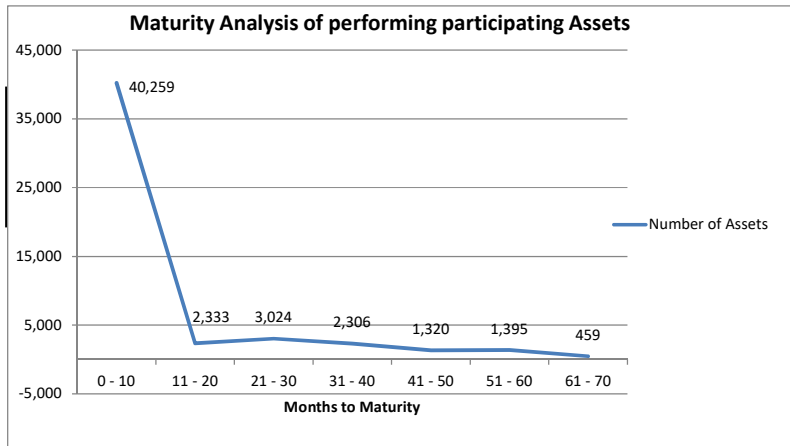
Programme Information	
Objective of programme	The main purpose of the company is to acquire the rights, title and interest in vehicle instalment sale agreements, pursuant to a securitisation scheme.
Back-up Servicer	Standard Bank of South Africa
Maximum programme size	ZAR 10 000 000 000
Contact Person Details	Jan Reyneke jan.reyneke@stonehagefleming.com

Asset Data

Initial number of assets - 26 August 2011	8,938
Initial value of assets - 26 August 2011	2,580,693,634
Number of assets outstanding	14,424
Average time to maturity (months)	36
Weighted average committed loan to value	88%
Weighted average current loan to value	15%
Largest asset value	1,242,700
Average asset value	76,968

Asset Analysis

New and Used breakdown:	
Percentage Used	47.22%
Vehicle breakdown:	
Portfolio covenants reported at the determination date of 3	91.27%
Mini	8.73%



Liquidity Facility

Purpose of liquidity facilities	The facility services the purpose to assist the Issuer in meeting short-term cash flow shortages or to overcome market disruptions.			
Total size of liquidity facilities	180,900,000			
Breakdown of liquidity facilities	Provider	Credit rating of provider	Maximum limits	Amount drawn
Super senior liquidity facility	Standard Bank of South Africa	AA (zaf)	180,900,000	0
Senior liquidity facility	N/A	N/A	N/A	N/A
Junior liquidity facility	N/A	N/A	N/A	N/A

Credit Enhancement

Available to each noteholder	Yes		
Provider	BMW Financial Services		
Credit rating of provider	A1		
	ZAR	% of Notes Issued	
Credit enhancement limit	904,500,000	25%	
Current value of credit enhancement	904,500,000	25%	
Credit enhancement committed and not drawn	-	0%	

Other Facilities

None
